



AMERICAN WOOD COUNCIL

# Design of Bolted Connections per the 2015 NDS

EARN 0.1 ICC Continuing Education Unit (CEU)



## DES335-A Design of Bolted Connections per the 2015 NDS

### Description:

This article provides an overview of a bolt design example utilizing AWC's *2015 National Design Specification® (NDS®) for Wood Construction*. Connection design philosophy and behavior, an overview of 2015 NDS provisions related to bolt design including local stresses in fastener groups, and a detailed design example are included.

### Learning Outcomes:

On completion of this course, participants will be able to:

1. Describe the application of the six yield limit equations for dowel-type connection design
2. Discuss when to utilize applicable adjustment factors for common bolted connections
3. Illustrate the spacing, end, and edge distance requirements for wood-to-wood bolted connections
4. Calculate the local stresses in fastener groups

To receive credit, you are required to read the entire article and pass the test. Go to <http://www.awc.org/education/ecourses> for complete text and to take the test for free.

This article provides an overview of a bolt design example utilizing the *American Wood Council's (AWC) 2015 National Design Specification® (NDS®) for Wood Construction*. Topics include connection design philosophies and behavior, an overview of 2015 NDS provisions related to bolt design including local stresses in fastener groups, and a detailed design example.

## Connection Design Philosophies

Discussion of several important design philosophies should help designers better understand connection design for wood members. First, wood is anisotropic, meaning it has different strength properties in various directions: longitudinal, tangential, and radial. Wood is composed of elongated, round, or rectangular tube-like cells. A simple analogy is to imagine the cellular nature of wood as a bundle of drinking straws. When axial compression is applied, the “bundle” is strong longitudinally and connecting the ends, primarily for bearing, is very simple. The “bundle” can also develop considerable tensile strength. Therefore, aligning connections so that loads are transferred concentrically along the length of the wood member is the most efficient design philosophy. However, this is not always practical or possible.

Continuing the analogy, if the load is applied perpendicular to the longitudinal axis of the “bundle” in compression, the straws tend to crush because of the weaker cell walls relative to the axial direction. While capacities are more limited when wood is loaded in compression perpendicular to grain (versus parallel to grain), the limits for bearing conditions on the surface of wood members are deformation-based, not strength-based, and published design values can be increased for smaller bearing areas. Accordingly, dowel bearing strengths are higher relative to compression parallel or compression perpendicular to grain design values. However, dowel bearing strengths perpendicular to grain are lower relative to dowel bearing strengths parallel to grain for larger diameter (>¼ inch) fasteners (see *Table 1*).

When tension is applied perpendicular to grain, the “bundles” tend to separate. Low strength values for this property can be encountered in commercial grades of lumber. For this reason, no sawn lumber tension design values perpendicular to grain have been published in the NDS. Cautionary provisions have been provided to alert designers to avoid design configurations that induce tension perpendicular to grain stresses wherever possible. Connections where moderate to heavy loads are acting through the tension side of a bending member (see NDS Table 12.5.1C, footnote 2) should be avoided. These connections should be designed to ensure that perpendicular-to-grain loads are applied through the compression side of the bending member, either through direct connections or top-bearing connectors.

Second, wood connections are stronger when the load is spread out over a number of fasteners. Large concentrated loads should be avoided unless designed not to exceed wood’s strength capabilities (e.g., net tension and shear). Spreading the load also builds in a degree of redundancy, which is useful in high wind or seismic events. To accomplish this, designers are advised to:

- Use small fasteners;
- Use multiple fasteners when possible; and
- Keep the scale of fasteners relative to the size of wood members being connected.

Third, as with other building materials, wood moves in response to environmental conditions. The main driver for this movement in wood is moisture. Allowances must be made to accommodate potential shrinkage and swelling, particularly in connections.

## Dowel-Type Fasteners

Wood members connected with dowel-type fasteners are probably the most common mechanical connection type because they are effective at transferring loads while also being relatively straightforward and efficient to

## Design of Bolted Connections per the 2015 NDS

By John “Buddy” Showalter, P.E.

*John “Buddy” Showalter is Vice President of Technology Transfer for the American Wood Council and serves as a member of the STRUCTURE magazine Editorial Board. He can be reached at [bshowalter@awc.org](mailto:bshowalter@awc.org).*

Table 1. Design values from 2015 NDS and 2015 NDS Supplement (psi).

No. 2 Southern Pine 2x12	Parallel to Grain	Perpendicular to Grain
Compression Design Value	1,250	565
Tension Design Value	450	No published values
Shear Design Value	175	n/a
Modulus of Elasticity	1,400,000	n/a
Dowel Bearing Strength for 1-inch diameter fastener	6,150	2,550

install. They come in many forms, and their strength properties can be calculated using the NDS. Dowelled connections transfer the force between members through a combination of dowel bearing and bending of the dowel fastener. Bolts must be structural quality bolts, equal to or better than ANSI/ASME Standard B18.2.1. Bolt holes must be a minimum of  $\frac{1}{32}$  inch and a maximum of  $\frac{1}{16}$  inch larger than the bolt diameter.

## Yield Limit Equations

The NDS yield equations are mechanics-based and are valid for a broad range of theoretical connection possibilities for dowel-type lateral connections (see *Figure 1*). These equations account for variables, such as dowel diameter, side-member size, main-member size and strength of the components. NDS yield equations are not limited to wood-to-wood connections. For example, wood-to-steel and wood-to-concrete design values are tabulated in the NDS. In keeping with the dual-format of the NDS, both allowable stress design (ASD) and load and resistance factor design (LRFD) provisions are included for connections.

Yield equations have been developed for each mode relating the joint load to the maximum stresses in the wood members and the fastener. The capacity of the connection under each yield mode is keyed to the bearing strength of the wood under the fastener and the bending yield strength of the fastener, with the lowest capacity calculated for the various modes taken as the reference design value for the connection. Four limiting yield modes characterized by the NDS equations include:

- MODE I: bearing-dominated yield of wood fibers
- MODE II: pivoting of fastener with localized crushing of wood fibers
- MODE III: fastener yield in bending at one plastic hinge and bearing-dominated yield of wood fibers
- MODE IV: fastener yield in bending at two plastic hinges and bearing-dominated yield of wood fibers

Subscripts “m” and “s” denote main member and side member, respectively. Accordingly, Mode I<sub>m</sub> represents the case where the main member controls by bearing-dominated yield of wood fibers, whereas Mode I<sub>s</sub> is side member controlled. Mode III is similarly characterized.

The dowel bending yield strengths,  $F_{yb}$ , of bolts are given in NDS Appendix I. For A36 and stronger steels,  $F_{yb}$  equal to 45,000 psi is a conservative value and is equivalent to the bolt strength reported in the original bolt

test research used to develop the methodology. For detailed technical information on lateral design equations, see AWC’s *Technical Report 12: General Dowel Equations for Calculating Lateral Connection Values* available at [www.awc.org](http://www.awc.org).

## Spacing, End, and Edge Distance

For dowel-type fasteners with diameters equal to or greater than  $\frac{1}{4}$  inch, the geometry factor,  $C_{\Delta}$ , provides a proportionate reduction of reference lateral design values for less than full end distance or less than full spacing distance. The lowest geometry factor for any fastener applies to all other fasteners in that same connection, not just to the end fastener or a pair of fasteners in a row. It should be noted that further reductions may be necessary when checking stresses in members at connections

For parallel or perpendicular to grain loading, limiting the maximum distance between outer rows of fasteners on the same splice plate to 5 inches avoids splitting that could occur in members at connections as a result of restraint of shrinkage associated with drying in service (structural glued laminated timber has different limits). Special detailing can be utilized in cases where distances between outer rows of bolts exceed the limits in 2015 NDS 12.5.1.3, such as the use of multiple splice plates or a single splice plate with slotted holes to allow shrinkage.

## Local Stresses in Fastener Groups

Where a fastener group is composed of closely spaced fasteners loaded parallel to

grain, the capacity of the fastener group may be limited by wood failure at the net section or tear-out around the fasteners caused by local stresses. The capacity of connections with closely spaced, large diameter bolts has been shown to be limited by the capacity of the wood surrounding the connection. Connections with groups of smaller diameter fasteners, such as typical nailed connections in wood-frame construction, may not be limited by wood capacity. The 2015 NDS Section 11.1.2 states that “Local stresses in connections using multiple fasteners shall be checked in accordance with principles of engineering mechanics. One method for determining these stresses is provided in Appendix E.” NDS Appendix E includes provisions for calculating net section tension capacity, row tear-out capacity, and group tear-out capacity.

## Conclusion

Connection design is an iterative process that sometimes requires trade-offs. Bolt design per the 2015 NDS is not just a matter of selecting a design value from a table. In addition to the yield limit equations for dowel-type connections, application of spacing, end, and edge distance requirements for connections and provisions related to bolt design including local stresses in fastener groups must be considered. Due to the anisotropic nature of wood, consideration for load direction relative to grain orientation and moisture effects are essential. Good connection design for wood considers all of these factors. ■

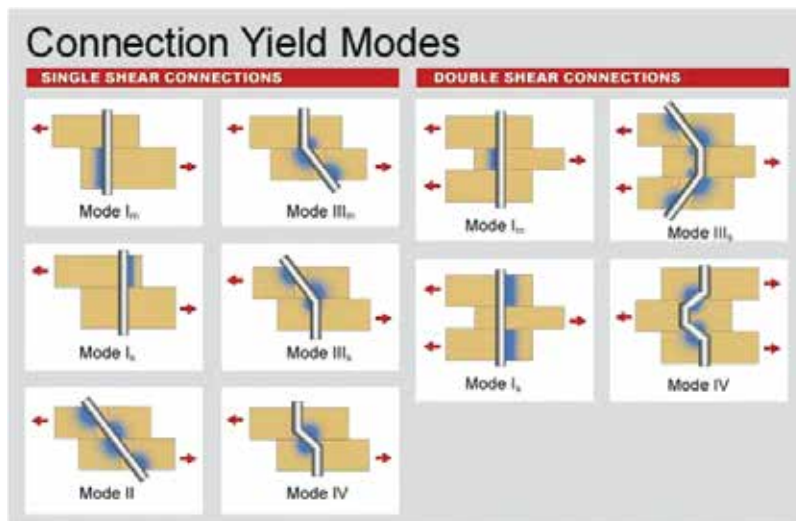


Figure 1. Dowel-type connection yield modes.

# Bolt Design Example

Determine the ASD capacity of a tension splice shown in Figure 2 with the following assumptions:

- Assume 1-inch diameter x 5-inch long bolts
- 2x12 No. 2 Southern Pine main and side members (see Table 1 for design values)
- Dead and construction live load controls
- Normal moisture and temperature conditions

## Adjustment Factors

First, determine applicable adjustment factors based on assumed conditions. NDS Table 11.3.1 provides a clear and concise overview of applicable adjustment factors for connections. Of the eight dowel-type connection adjustment factors applicable for ASD, only five have potential applicability to this example (as highlighted in Figure 3). Since two of the assumptions are a normal moisture and temperature environment, the wet service factor,  $C_M$ , and the temperature factor,  $C_t$ , are both unity.

The load duration factor,  $C_D$ , accounts for wood's unique ability to carry substantially greater maximum loads for short durations than for long durations. Based on the assumption of the dead and construction live load combination controlling, the seven-day load duration factor of 1.25 is applicable per NDS 2.3.1.

The group action factor,  $C_g$ , accounts for load distribution within a fastener group. Tests of bolted connector joints have shown that the load capacity of connections containing multiple fasteners in a row is not directly proportional to the number of fasteners, with those located near the ends of the row carrying a greater proportion of the applied load than those located in the interior of the row. Section 11.3.6 of the 2015 NDS provides both a calculation method and tabulated values. For this example and using NDS Table 11.3.6A, since the gross cross-sectional area of the side members ( $A_s = 2 \times 16.875 \text{ in}^2$ ) is twice that of the main member ( $A_m = 16.875 \text{ in}^2$ ), the ratio  $A_m/A_s = 0.5$  is used with  $A_s = 16.875$  per footnote 1 (Figure 4). The interpolated value is  $C_g = 0.97$ .

As discussed earlier, the geometry factor,  $C_\Delta$ , provides a proportionate reduction of reference lateral design values for less than full end distance or less than full spacing distance. Table 2 provides a summary of end and edge distance, spacing assumptions and respective adjustment factors based on NDS requirements.

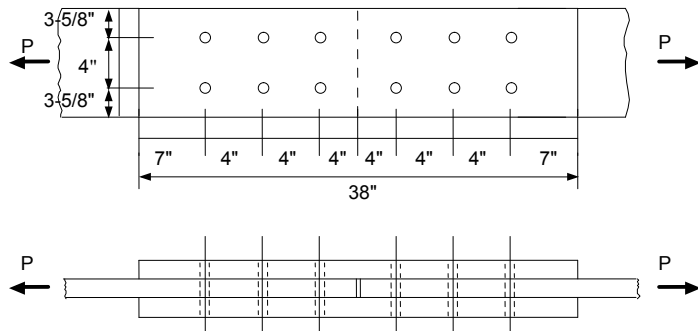


Figure 2. Bolted tension splice example.

	ASD Only	ASD and LRFD								LRFD Only			
	Load Duration Factor <sup>1</sup>	Wet Service Factor	Temperature Factor	Group Action Factor	Geometry Factor <sup>3</sup>	Penetration Depth Factor <sup>3</sup>	End Grain Factor <sup>3</sup>	Metal Side Plate Factor <sup>3</sup>	Diaphragm Factor <sup>3</sup>	Toe-Nail Factor <sup>3</sup>	Formal Conversion Factor	Resistance Factor	Time Effect Factor
Dowel-type Fasteners (e.g. bolts, lag screws, wood screws, nails, spikes, drift bolts, & drift pins)	$Z = Z \times C_D$	$C_D$	$C_M$	$C_t$	$C_g$	$C_\Delta$	-	$C_{eg}$	-	$C_{di}$	$C_{tr}$	3.32	0.65 $\lambda$

Figure 3. Excerpt of 2015 NDS Table 11.3.1 connection adjustment factors for dowel-type fasteners. Note: See actual NDS table for full details of superscript reference.

		For $D = 1"$ , $s = 4"$ , $E = 1,400,000 \text{ psi}$										
$A_s/A_m$	$A_s$ in. <sup>2</sup>	Number of fasteners in a row										
		2	3	4	5	6	7	8	9	10	11	12
0.5	5	0.98	0.92	0.84	0.75	0.68	0.61	0.55	0.50	0.45	0.41	0.38
	12	0.99	0.96	0.92	0.87	0.81	0.76	0.70	0.65	0.61	0.57	0.53
	20	0.99	0.98	0.95	0.91	0.87	0.83	0.78	0.74	0.70	0.66	0.62
	28	1.00	0.98	0.96	0.93	0.90	0.87	0.83	0.79	0.76	0.72	0.69
	40	1.00	0.99	0.97	0.95	0.93	0.90	0.87	0.84	0.81	0.78	0.75
1	64	1.00	0.99	0.98	0.97	0.95	0.93	0.91	0.89	0.87	0.84	0.82
	5	1.00	0.97	0.91	0.85	0.78	0.71	0.64	0.59	0.54	0.49	0.45
	12	1.00	0.99	0.96	0.93	0.88	0.84	0.79	0.74	0.70	0.65	0.61
	20	1.00	0.99	0.98	0.95	0.92	0.89	0.86	0.82	0.78	0.75	0.71
	28	1.00	0.99	0.98	0.97	0.94	0.92	0.89	0.86	0.83	0.80	0.77
40	1.00	1.00	0.99	0.98	0.96	0.94	0.92	0.90	0.87	0.85	0.82	
64	1.00	1.00	0.99	0.98	0.97	0.96	0.95	0.93	0.91	0.90	0.88	

Figure 4. Excerpt from NDS Table 11.3.6A group action factors for bolts with wood side members. Note: See actual NDS table for full details of superscript reference.

Table 2. Applicable geometry factors for example assumptions.

2015 NDS Provisions	NDS Limit	Example Assumption	$C_D$
End Distance <ul style="list-style-type: none"> <li>• Section 12.5.1.2(a)</li> <li>• Table 12.5.1A</li> </ul>	$7D = 7"$ Parallel to Grain, Tension for Softwoods	4" main member	$4"/17" = 0.57$
Spacing Between Bolts <ul style="list-style-type: none"> <li>• Section 12.5.1.2(c)</li> <li>• Table 12.5.1B</li> </ul>	$4D = 4"$ Parallel to Grain	4"	1.0
Edge Distance <ul style="list-style-type: none"> <li>• Section 12.5.1.3</li> <li>• Table 12.5.1C</li> </ul>	$1.5D = 1.5"$ Parallel to Grain with $l/D \leq 6$	3-5/8"	1.0
Spacing Between Rows <ul style="list-style-type: none"> <li>• Section 12.5.1.3</li> <li>• Table 12.5.1D</li> </ul>	$1.5D = 1.5"$ Parallel to Grain	4"	1.0

## Yield Limit Values

Section 12.3 of the 2015 NDS provides the methodology for calculating reference lateral design values for dowel-type connectors. For double shear connections, only four yield limit equations apply. Using NDS Table 12.3.1A and Equations 12.3-7 through 12.3-10, the four calculated yield values are:

$$I_m = 2306 \text{ lbs Controls}$$

$$I_s = 4612 \text{ lbs}$$

$$III_s = 4307 \text{ lbs}$$

$$IV = 6003 \text{ lbs}$$

As noted earlier, the lowest capacity calculated for the various yield modes is taken as the unadjusted reference lateral design value,  $Z$ , for the connection. Therefore,  $Z = 2306$  pounds.

Note that the NDS also tabulates bolt design values based on the yield limit equations. *Figure 5* shows the selection of the applicable reference lateral design value from 2015 NDS Table 12 F. Note that tabulated values are rounded to the nearest 10 psi.

Note also that a free online connection calculator and corresponding apps for smartphone and tablet devices is available on the AWC website. It allows calculation of the various yield modes for determining reference lateral design values.

### Adjusted Multiple Bolt Capacity

The next step is to calculate the adjusted multiple bolt capacity using the reference lateral design value and all applicable adjustment factors. NDS nomenclature uses the prime symbol to denote adjusted design values, therefore the equation becomes:

$$\begin{aligned} Z' &= n Z C_D C_g C_{\Delta} \\ &= (6)(2306)(1.25)(0.97)(0.57) \\ &= 9,562 \text{ lbs} \end{aligned}$$

where:  $n$  = number of bolts on each side of the splice

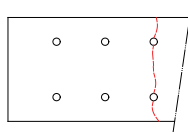
### Local Stresses in Fastener Groups

The final step in the process is to check net section requirements around the group of fasteners. Using NDS Appendix E, check capacities for net section tension, row tear-out, and group tear-out. To accomplish this, design values for tension and shear as shown in *Table 1* are used. Similar to bolt design, these reference design values are modified by applicable adjustment factors for end use. For this example, the only applicable adjustment factor is the load duration factor,  $C_D = 1.25$ . See NDS Appendix E for the definition of terms not clarified here.

### Net Section Tension Check

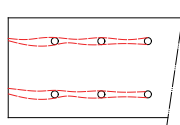
- $Z_{NT}' = F_t' A_{net}$  (2015 NDS Equation E.2-1)
- $F_t' = 450(1.25) = 562.5 \text{ psi}$
- $A_{net} = 13.7 \text{ in}^2$
- $Z_{NT}' = 7,706 \text{ lbs}$

Note: Hole size for the net area includes 1/16-inch oversizing per 2015 NDS 12.1.3.2.



### Row Tear-Out Check

- $Z_{RTi}' = n_i F_v' t s_{critical}$  (2015 NDS Equation E.3-2)
- $n_i = 3$
- $F_v' = 175(1.25) = 219 \text{ psi}$
- $t = 1.5''$
- $s_{critical} = 4''$
- $Z_{RTi}' = 3,938 \text{ lbs}$  for one row
- $Z_{RT}' = 7,875 \text{ lbs}$  for two rows



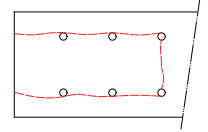
Note:  $s_{critical}$  is the minimum of the end distance and the in-row bolt spacing = 4 inches.

Main Member Thickness $t_m$ in.	Side Member Thickness $t_s$ in.	Bolt Diameter $D$ in.	G=0.67 Red Oak			G=0.55 Mixed Maple Southern Pine			G=0.50 Douglas Fir-Larch			G=0.49 Douglas Fir-Larch(N)		
			$Z_{  }$ lbs.	$Z_{\perp}$ lbs.	$Z_{m\perp}$ lbs.	$Z_{  }$ lbs.	$Z_{\perp}$ lbs.	$Z_{m\perp}$ lbs.	$Z_{  }$ lbs.	$Z_{\perp}$ lbs.	$Z_{m\perp}$ lbs.	$Z_{  }$ lbs.	$Z_{\perp}$ lbs.	$Z_{m\perp}$ lbs.
			1/2	5/8	3/4	7/8	1	1 1/8	1 1/4	1 1/2	1 3/4	2	2 1/4	2 1/2
1-1/2	1-1/2	1	2810	2040	1020	2310	1530	770	2100	1350	680	2060	1290	650

Figure 5. Excerpt of 2015 NDS Table 12F for selection of applicable reference lateral design value for double shear wood-to-wood bolted connections. Note: See actual NDS table for full details of superscript reference.

### Group Tear-Out Check

- $Z_{GT}' = Z_{RT1}'/2 + Z_{RT2}'/2 + F_t' A_{group-net}$  (2015 NDS Equation E.4-1)
- $Z_{RT1}' = Z_{RT2}' = 3,938 \text{ lbs}$
- $F_t' = 450(1.25) = 562.5 \text{ psi}$
- $A_{group-net} = 4.41 \text{ in}^2$
- $Z_{GT}' = 6,418 \text{ lbs}$



Note: Hole size for the net area includes 1/16-inch oversizing per 2015 NDS 12.1.3.2.

### Final Bolt Capacity

Comparing adjusted net section capacities to the adjusted multiple bolt connection capacity reveals that group tear-out capacity controls at 6,418 lbs:

Adjusted Multiple Bolt Capacity	$Z' = 9,562 \text{ lbs}$
Net Section Tension Capacity	$Z_{NT}' = 7,706 \text{ lbs}$
Row Tear-Out Capacity	$Z_{RT}' = 7,875 \text{ lbs}$
Group Tear-Out Capacity	$Z_{GT}' = 6,418 \text{ lbs Controls}$

### Trade-offs

Although counter-intuitive, for this particular example, decreasing the bolt diameter increases the capacity of the connection. Specifically, changing the bolt diameter to 3/4 inch results in an adjusted multiple bolt capacity of 7,174 lbs, but the group tear-out capacity increases to 6,627 pounds.

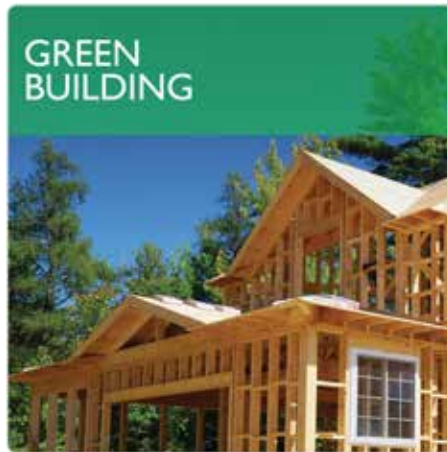
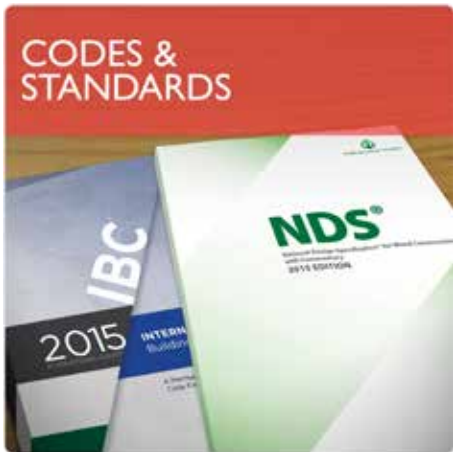
Modification of fastener placement within a fastener group can also be used to increase row tear-out and group tear-out capacity limited by local stresses around the fastener group. Increased spacing between fasteners in a row is one way to increase row tear-out capacity. Increased spacing between rows of fasteners is one way to increase group tear-out capacity. However, as discussed earlier, 2015 NDS Section 12.5.1.3 limits the spacing between outer rows of fasteners paralleling the member on a single splice plate to 5 inches. This

requirement is imposed to limit local stresses resulting from shrinkage of wood members. Where special detailing is used to address shrinkage, such as the use of slotted holes, the 5-inch limit can be adjusted.

By increasing the spacing between bolt rows,  $s_{row}$ , in the example to 5 inches, the group tear-out capacity is increased. *Table 3* reveals trade-offs that can be used in the example to increase the joint capacity based on the limits discussed. A 7/8-inch bolt with 5-inch spacing between rows provides a capacity of 7,365 pounds, the optimal value for this particular configuration without special detailing.

*Table 3. Trade-offs for bolt design values vs. net section capacities (lbs).*

Bolt Diameter (in.)	Adjusted Multiple Bolt Capacity $nZ'$	Net Section Tension $Z_{NT}'$	Row Tear-out $Z_{RT}'$	Group Tear-out $Z_{GT}'$	
				$s_{row} = 4''$	$s_{row} = 5''$
1	9562	7706	7875	6418	7260
7/8	8368	7910	7875	6521	<b>7365</b>
3/4	7174	8121	7875	6627	7471



## AMERICAN WOOD COUNCIL

The American Wood Council (AWC) is the voice of North American traditional and engineered wood products, representing over 75% of the industry. AWC's engineers, technologists, scientists, and building code experts develop state-of-the-art engineering data, technology, and standards (e.g. NDS) on structural wood products for use by design professionals, building officials, and wood products manufacturers to assure the safe and efficient design and use of wood structural components.

[www.awc.org](http://www.awc.org)

[info@awc.org](mailto:info@awc.org)